



LEÓN DE ORO USA
AN AMERICAN NETTING COMPANY

Trust
the net

GOLDSAFE™

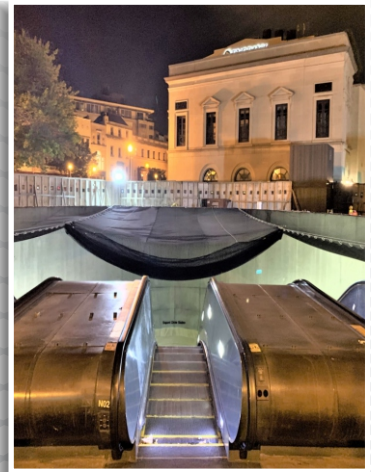
Our **GOLDSAFE™** safety nets are compliant to A10.11-(2016), OSHA 1926.501-502 standards, as well as NYC local Law.

Protecting tradespeople working at height, adjacent to properties and the general public is essential. **GOLDSAFE™** Netting provides perimeter fall protection for workers and debris containment for the areas below.

They are available with or without a debris liner, depending on project requirements.

If your project requires certified engineering in any of the 50 United States, we can help with that too!

WOULD YOU LIKE TO OFFER A “TURNKEY” PROJECT TO YOUR CUSTOMERS? NOW YOU CAN! THE ANSWER IS ALWAYS **YES!**



GOLDSAFE™

- ✓ **SYSTEM PURCHASE OPTION (Including arms, nets & hardware)**
- ✓ **SYSTEM RENTAL OPTIONS (Including arms, nets & hardware)**
- ✓ **ENGINEERING-STAMPED DRAWINGS (All 50 States, including NYC DOB)**
- ✓ **INSTALLATION OFFERED**
- ✓ **ON SITE TECHNICAL ASSISTANCE (WE WILL TRAIN YOUR CREWS!!!)**
- ✓ **THE ANSWER IS ALWAYS YES!**



LEÓN DE ORO USA
AN AMERICAN NETTING COMPANY

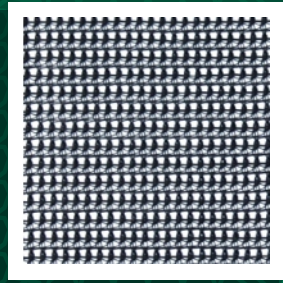
Trust
the net

GOLDSAFE™

GOLDSAFE™ Systems, GSN (without liners) & GSNL (with liners) are both ANSI A-10.11 (2016) & OSHA 1926.501 compliant.

GOLDSAFE™ Systems can be manufactured with two liner options, based upon project requirements.

1/8 inch mesh 70% opacity



3/8 inch mesh 60% opacity



Trust
the net

THE FOLLOWING SIZES OF **GOLDSAFE™** NETS WITH LINERS, ARE IN STOCK AND READY TO SHIP

LDOUSA PART

GSNL-1015	10' x 15'
GSNL-1020	10' x 20'
GSNL-1515	15' x 15'
GSNL-1520	15' x 20'
GSNL-1525	15' x 25'
GSNL-1530	15' x 30'
GSNL-1717	17' x 17' x 24'

LDOUSA PART

GSNL-2020	20' x 20'
GSNL-2025	20' x 25'
GSNL-2030	20' x 30'
GSNL-2525	25' x 25'
GSNL-2550	25' x 50'
GSNL-3040	30' x 40'

Fiber: High Tenacity Polyamide (Nylon)

Cord Diameter: 1/4 in (6mm.)

Mesh Size: 2-3/4 in (70mm.)

Mesh Break: 1056 lbf. (4.70 kN.)

Weight: 0.0911 lb/ft²

Drop Test: ANSI A10.11 (2016) & OSHA 1926.501 compliant. Rated to 17,500lb ft-lb.

UV: UV Stabilizers added.

Color: Black

